

Figure 1. P22 procapsids at 3.28 Å using standard icosahedral averaging

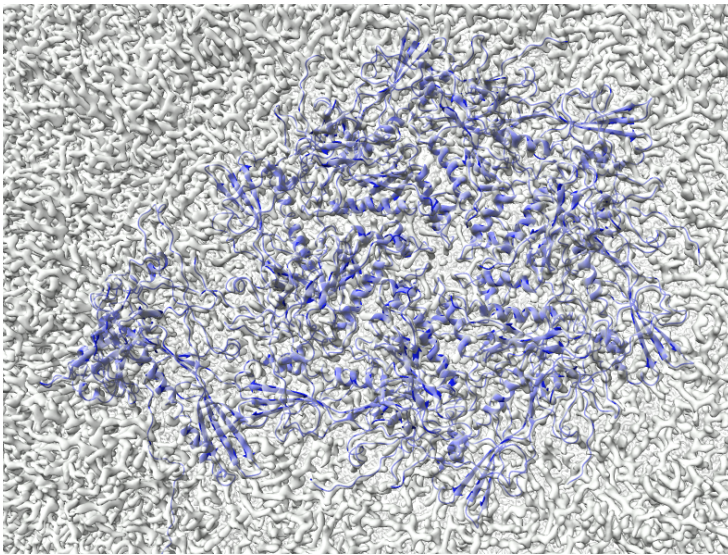


Figure 2. CUS-3 phage structure at 2.8 Å with the coat subunits (blue) fit into the map.

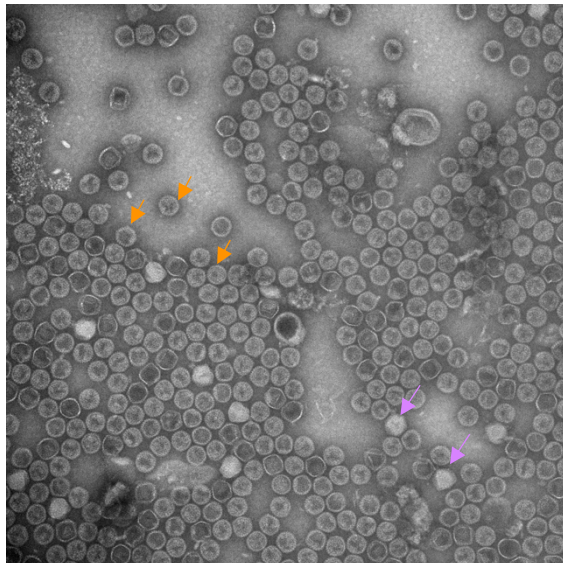


Figure 3. Negative stain electron micrograph of Sf6 PC sample. Examples of PCs are indicated by the orange arrows. There are also a few phages marked with lavender arrows.

Sf6_P22_PC.220131.004.tif
Sf6_PC
Cal: 0.877 nm/pix
9:25 01/31/22

100 nm
HV=80.0kV
Direct Mag: 68000x
X:-290.628 Y:-395.0567
UCONN BIOSCIENCE EM LAB