

Figure 1. Negative stain electron micrographs of recombinant tau fibrils from seeded cells (a). Fibrils from AD-seeded cells (b). Fibrils from AD-seeded cells (c). Fibrils from CBD-seeded cells.

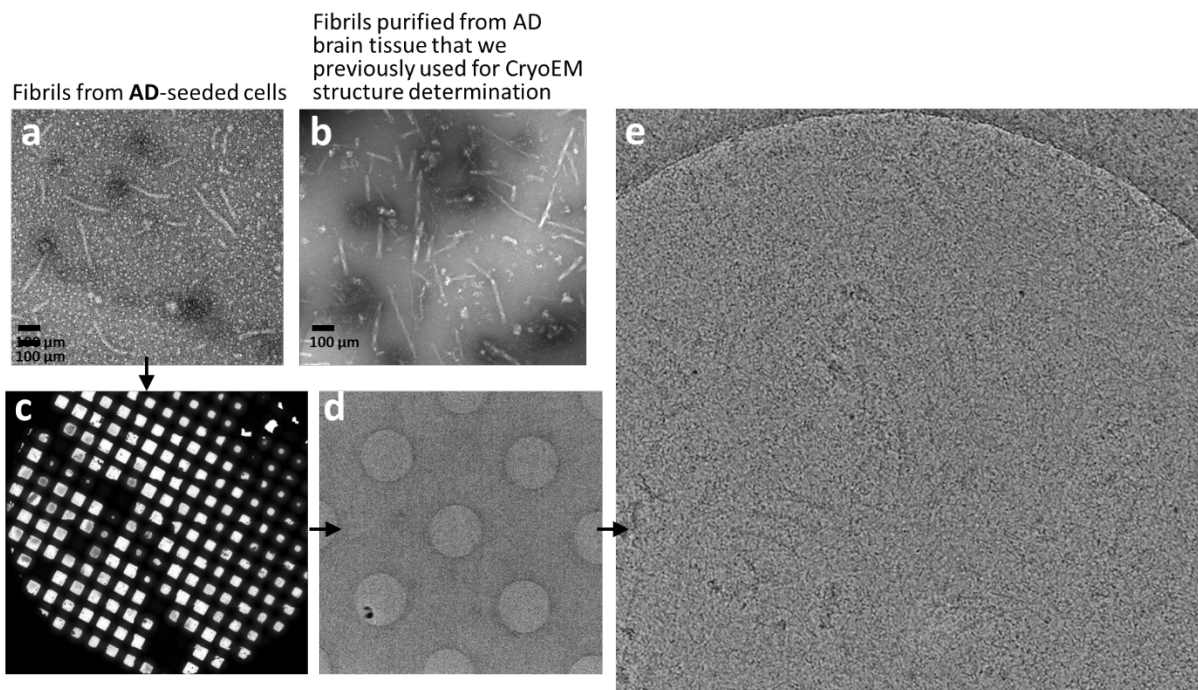


Figure 2. (a) Negative-stain grids of fibrils purified from AD-seeded cells. (b) Shown for comparison, fibrils purified from AD brain tissue that we used previously for CryoEM structure determination. (c) Grid level view of squares of vitrified fibrils purified from AD-seeded cells. (d) Square view of grid from c. (e) Hole view of grid from c.