

Figures/Preliminary Results *

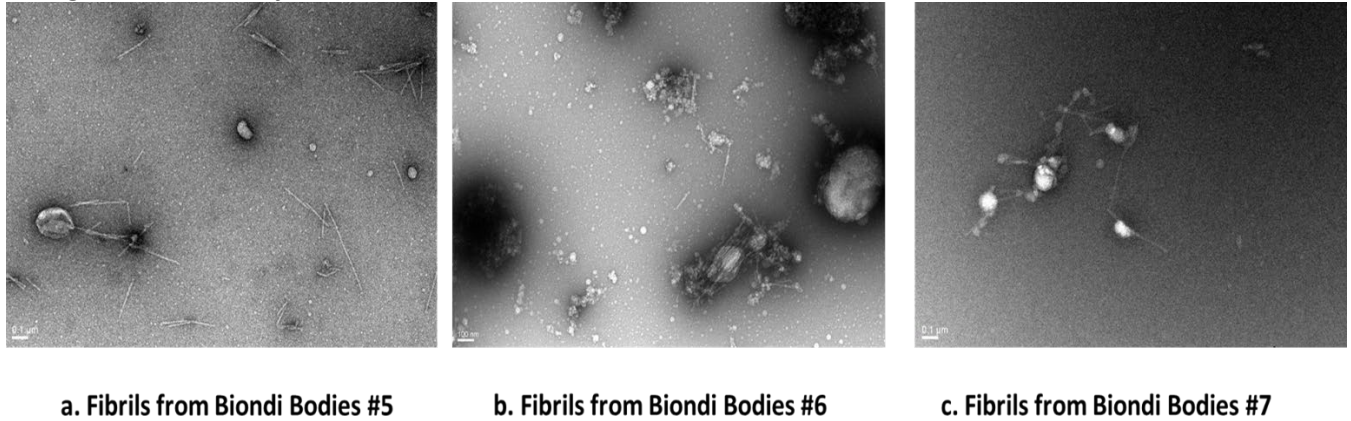


Fig 1. Negative stain electron micrographs of Biondi Bodies fibrils from human brain tissue (a). Fibrils from Biondi Bodies #5 (b).Fibrils from Biondi Bodies #6 (c). Fibrils from Biondi Bodies #7

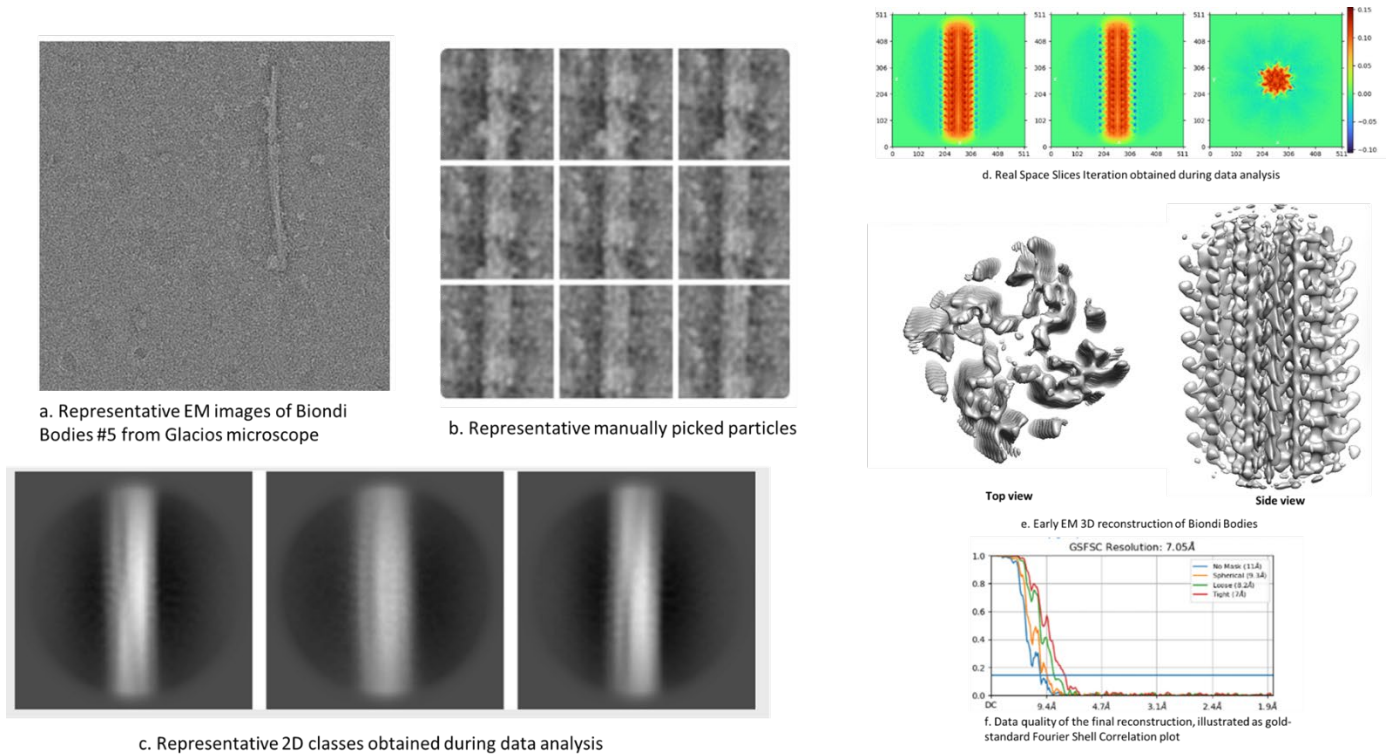


Fig 2. Structural determination of Biondi Body fibrils

(a). Representative EM images of Biondi Bodies #5 from Glacios microscope (b).Representative manually picked particles (c).Representative 2D classes obtained during data analysis (d). Real Space Slices Iteration obtained during data analysis (e). EM 3D reconstruction of Biondi Bodies (f). Data quality of the final reconstruction, illustrated as gold-standard Fourier Shell Correlation plot