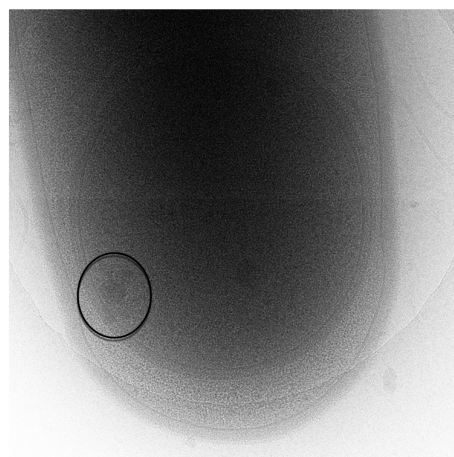
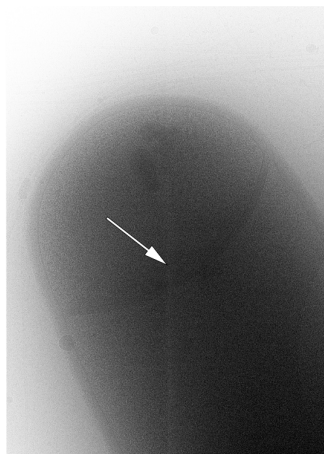
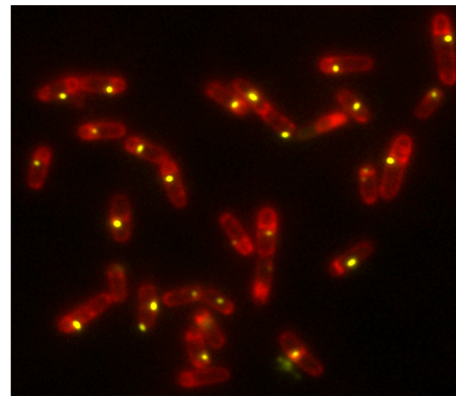
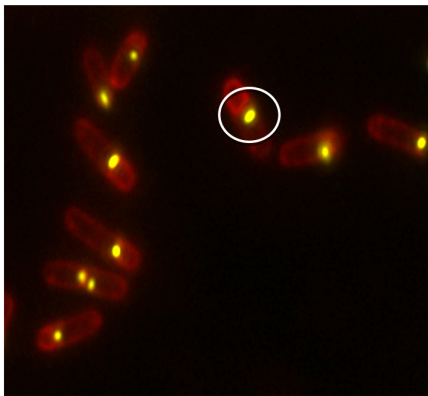


Attached is a western blot of two proteins from the megacomplex, each tagged with a fluorescent protein for detection. If the strain has only PksR-YFP, then the addition of IPTG makes no difference.

If the strain has PksE-CFP and PksR-YFP, then the expression of the pksR-yfp gene fusion is dependent on the addition of IPTG because the pksE gene is upstream in the operon.



Fluorescence and cryo-TEM images of sporulating *Bacillus subtilis* cells expressing PksR-YFP. The enzyme megacomplex density is shown as yellow spots shown in white circle in the fluorescence image and with white arrow and black circle in the TEM image.