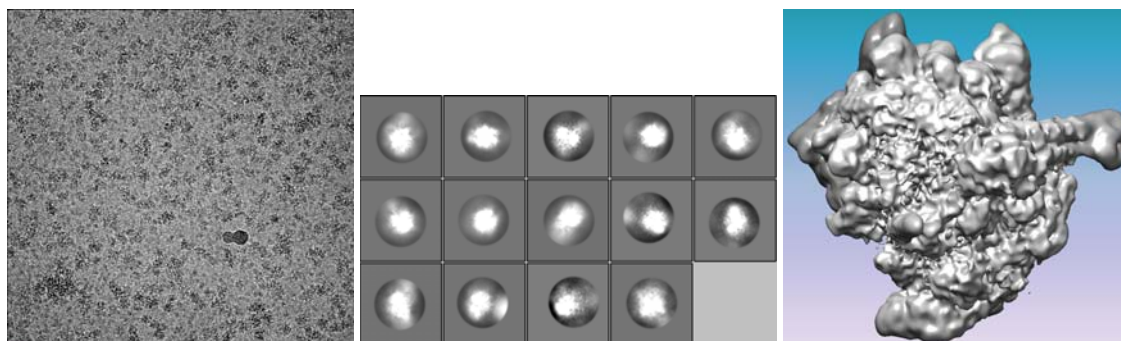
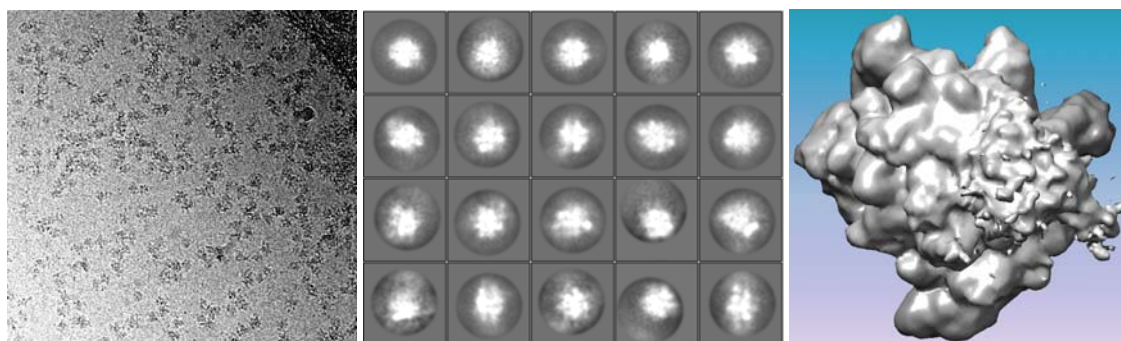


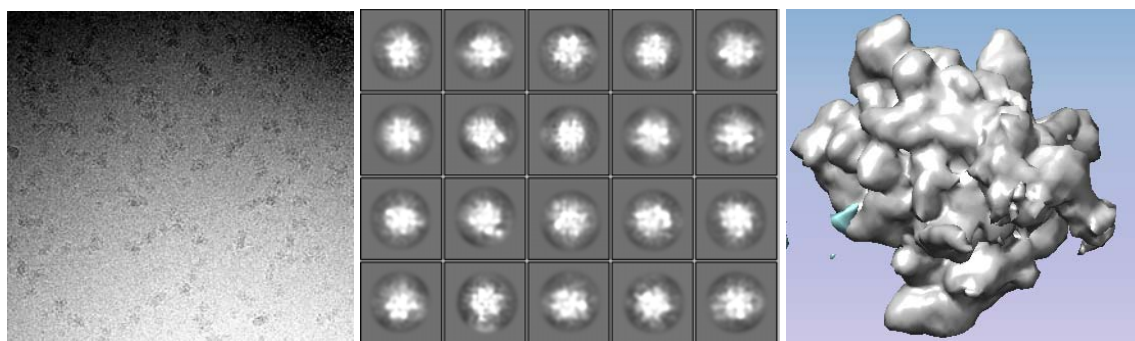
**Qlambda-sigma70-TEC16:** representative micrograph, 2-D classes, and initial reconstruction (5.4 Å)



**Qlambda-TEC20:** representative micrograph, 2-D classes, and initial reconstruction (7.0 Å)



**Q21-NusA-TEC40:** representative micrograph, 2-D classes, and initial reconstruction (7.3 Å)



**NusA-TEC40:** representative micrograph, 2-D classes, and initial reconstruction (8.9 Å)