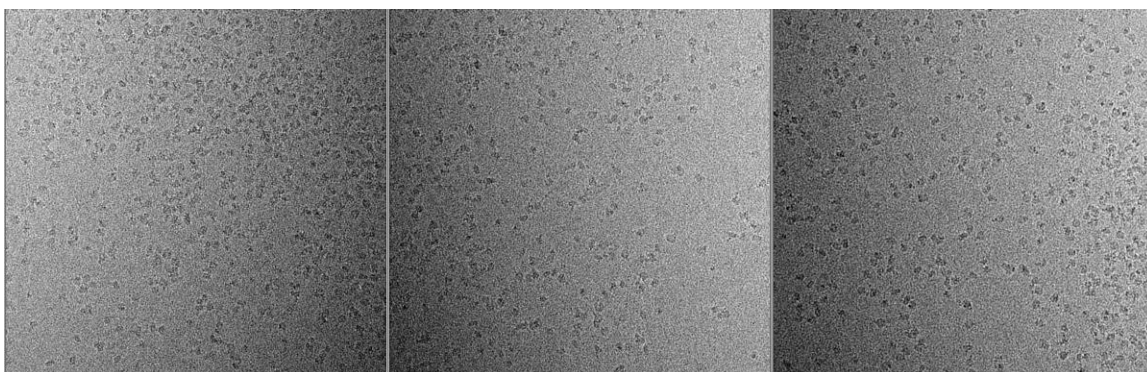
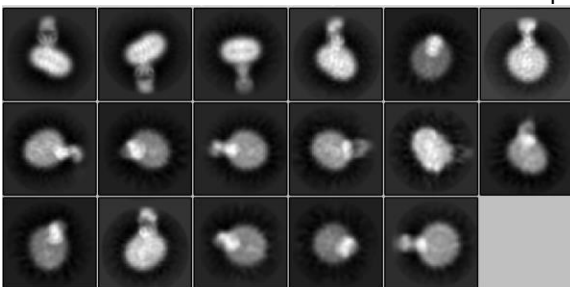


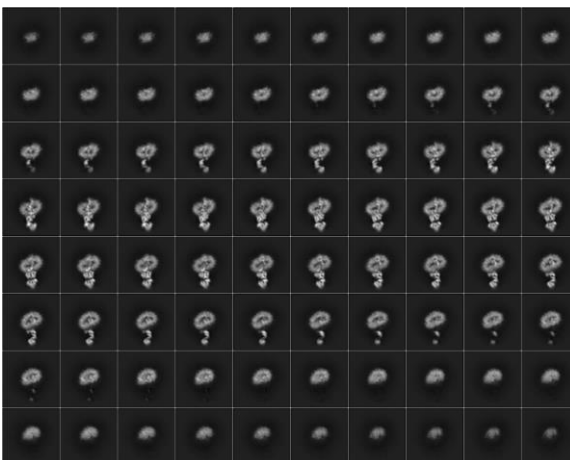
Grid atlas (left) generated by EPU showing grid-squares (blue) used for data collection at UVa. A representative grid-square (right) displays uniform ice thickness with minimal contamination.



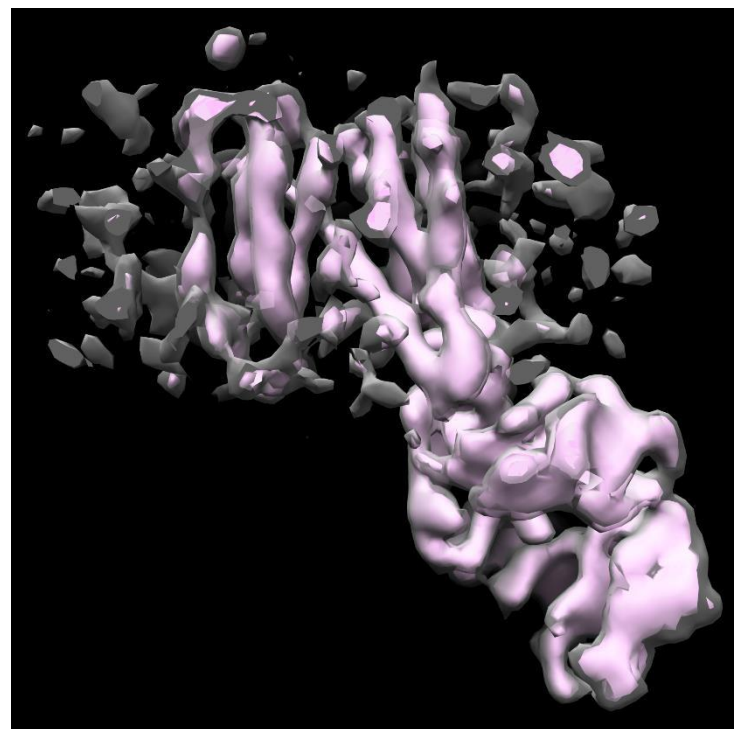
Motion corrected micrographs from grid b23g2 at defocus levels of -1.5, -1.75, and -2.2 μm (left to right) collected at UVa on a Titan Krios with Falcon 3ec detector operating in counting mode (pixel size 1.06 Å and total dose 65 e⁻/Å²).



Selected 2D class averages derived from 279,000 particles using RELION-3.0. The protruding density is ascribed to the bound Fab.



Sections through the 3D reconstruction derived from 115,000 particles using RELION-3.0.



3D reconstruction derived using RELION-3.0 and rendered at two isosurface levels (gray and purple) using Chimera. The upper zone is a side view of the protein target showing resolved transmembrane α-helices. The Fab moiety is in the lower right. The peripheral gray densities are ascribed to the detergent micelle.