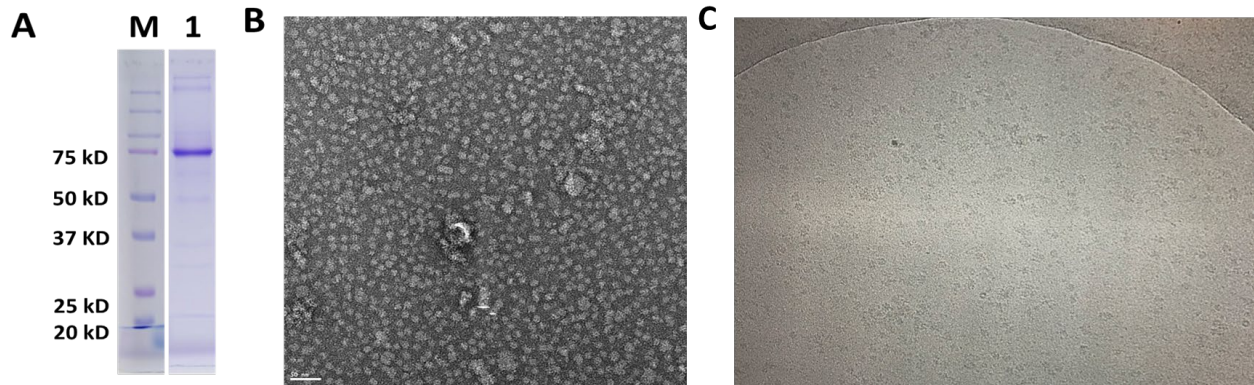


# Single-Particle Cryo-EM Structures of TRPML3 Channel in Native Cell Membrane Nanoparticles

Youzhong Guo

## Preliminary data



**Figure. 1 Initial analysis of TRPML3 with NCMN system.**

**A.** The purity of TRPML3 showed on SDS-PAGE gel with M as a protein marker and lane 1 with purified TRPML3. **B.** Representative negative stain micrograph of TRPML3 with monodisperse. **C.** Representative cryo-EM micrograph taken with a Gatan K3 Direct Detection Camera.