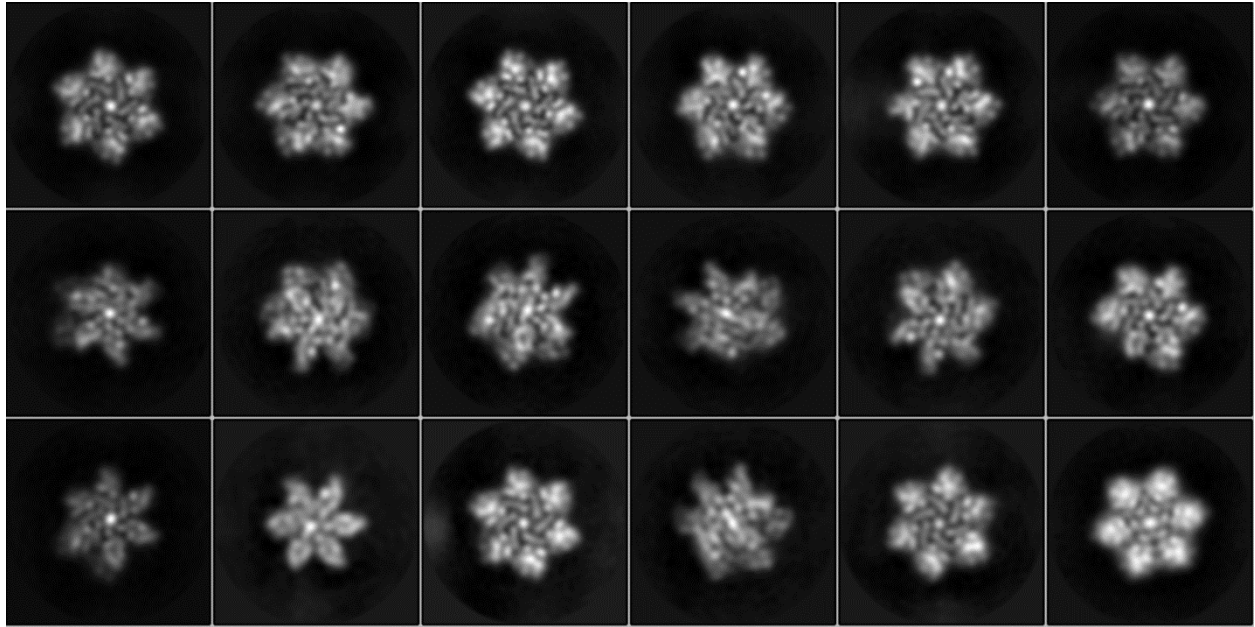


1. **2D average of HIV capsid hexamer in complex with BicD2.** Collected from Glacios, 200 keV, K2 camera.



2. **Low-resolution reconstruction of HIV capsid hexamer in complex with TRIM-Cyp.** The red circled density suggests the presence of TRIM-Cyp. Collected from Glacios, 200 keV, K2 camera.

