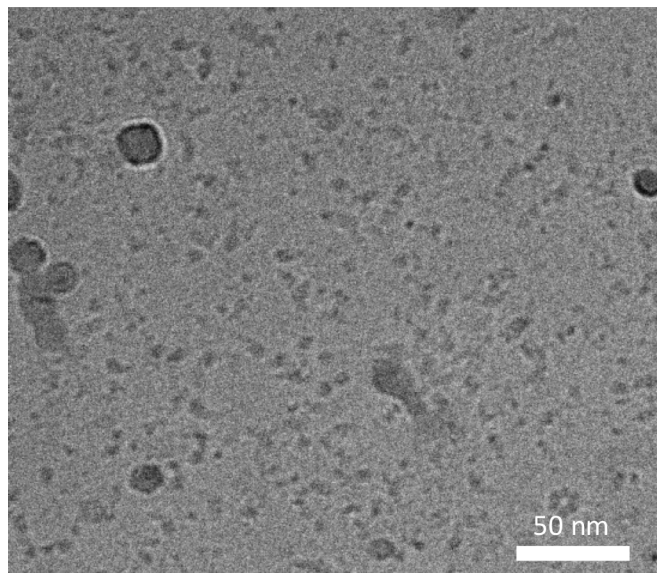


Figure 1 CryoEM micrographs for IDE-insulin complex under the condition that the molar ratio of IDE to insulin is 2 to 1. Cu 1.2/1.3, 200 mesh grid was glow discharged for 30 seconds. 2.5 μ l of protein at 0.25mg/ml was loaded onto the grid, and then the grid was blotted using Vitrobot with 1 layer of paper, force 1, 100% humidity for 2.5 seconds. The micrograph was collected using Talos at 120Kx magnification. Two high affinity Fab, Fab1 and Fab-H11 were used.

IDE + Fab1 + Insulin



IDE + Fab-H11 + Insulin

