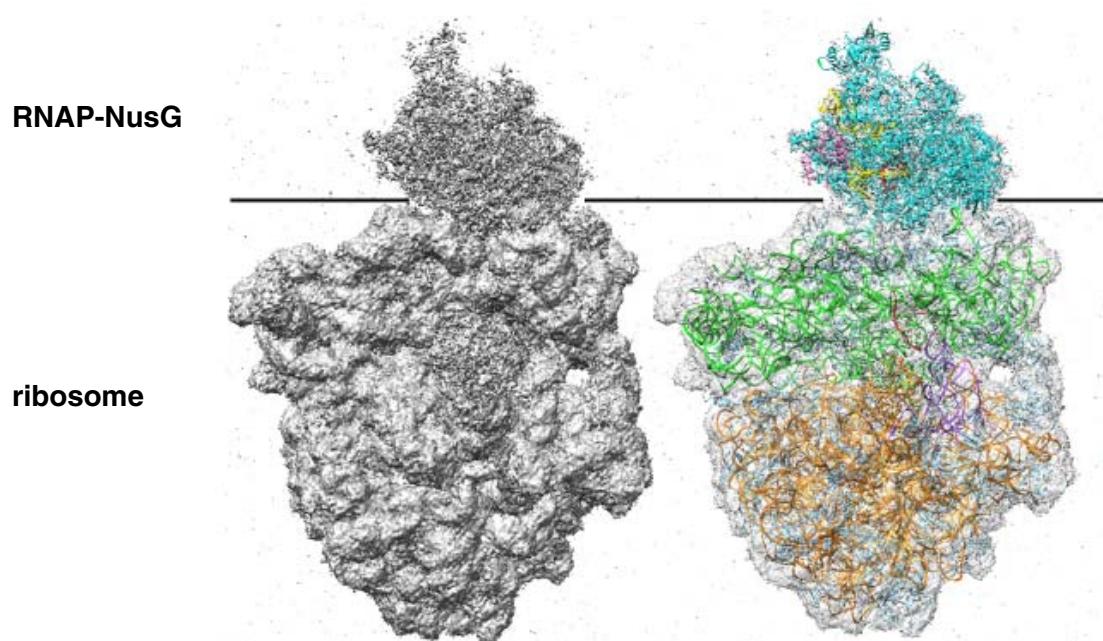


**Figure 1.** Expressome-1 plus NusG: representative micrograph (left) and 2-D classes (right).



**Figure 2.** Expressome-1 plus NusG: fitted map (two orthogonal views). Gray surface, cryo-EM reconstruction (4.6 Å); density feature labelled "RNAP-NusG," fitted cryo-EM structure of transcribing RNAP (PDB 6ALH; RNAP as cyan ribbon, DNA as yellow ribbon, mRNA as red ribbon) and NusG (PDB 6C6U; NusG as pink ribbon); density feature labelled "ribosome," fitted cryo-EM structure model of translating 70 S ribosome (PDB 4V6G; 30S as green ribbon; 50S as gold ribbon; tRNA as purple ribbon; mRNA as red ribbon).