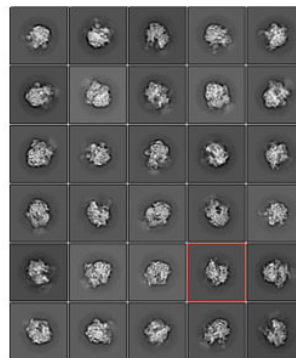
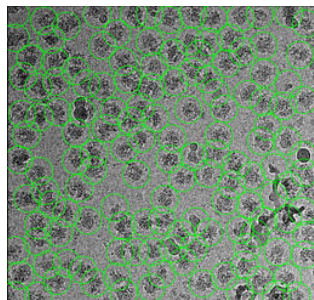
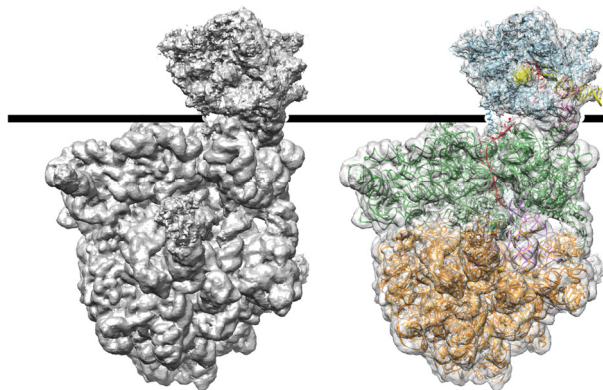


**Figure 1.** RfaH-coupled expressome. Top, representative micrograph (left) and 2-D classes (right). Bottom, initial reconstruction and fitted map. Gray surface, cryo-EM reconstruction (5.7 Å); density feature labelled "RNAP-RfaH," fitted structures of transcribing RNAP (PDB 6ALH; RNAP as cyan ribbon, DNA as yellow ribbon, mRNA as red ribbon) and RfaH (PDB 6C6T; pink ribbon); density feature labelled "ribosome," fitted structure of translating 70 S ribosome (PDB 4V6G; 30S as green ribbon; 50S as gold ribbon; tRNA as purple ribbon; mRNA as red ribbon).

**RNAP-RfaH**

**ribosome**



**Figure 2.** NusA/RfaH-coupled expressome. Top, representative micrograph (left) and 2-D classes (right). Bottom, initial reconstruction and fitted map. Gray surface, cryo-EM reconstruction (5.3 Å); density feature labelled "RNAP-NusA-RfaH," fitted structures of transcribing RNAP (PDB 6ALH; RNAP as cyan ribbon, DNA as yellow ribbon, mRNA as red ribbon), NusA (PDB 6FLQ; blue ribbon), and RfaH (PDB 6C6T; pink ribbon); density feature labelled "ribosome," fitted structure of translating 70 S ribosome (PDB 4V6G; 30S as green ribbon; 50S as gold ribbon; tRNA as purple ribbon; mRNA as red ribbon).

**RNAP-  
NusA-RfaH**

**ribosome**

