

SUPPLEMENTAL INFORMATION

Figure 1. Sample preparation: (A) UV profile from size-exclusion chromatography (SEC) shows stable formation of the larger NorA:Fab complex. (B) Analysis of the peak fraction by SDS-PAGE shows discrete Fab and NorA bands, further confirming complex formation.

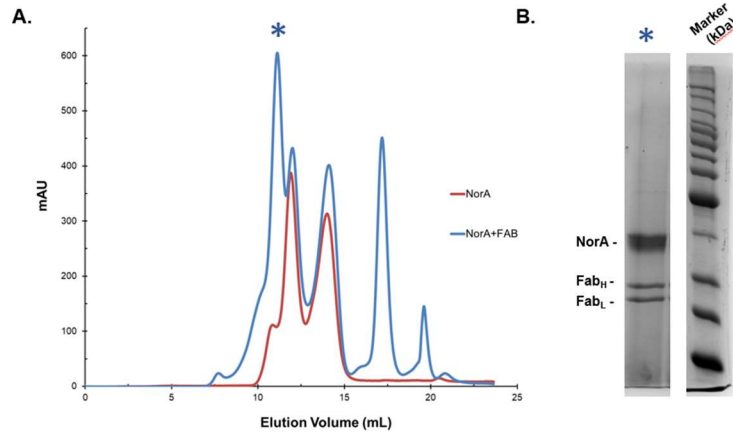


Figure 2. CryoEM data quality: (A) Representative micrograph of the vitrified NorA:Fab complex. (B) 2D class averages of template-picked particles. Both NorA and the protruding Fab F_V and F_C domains are clearly visible.

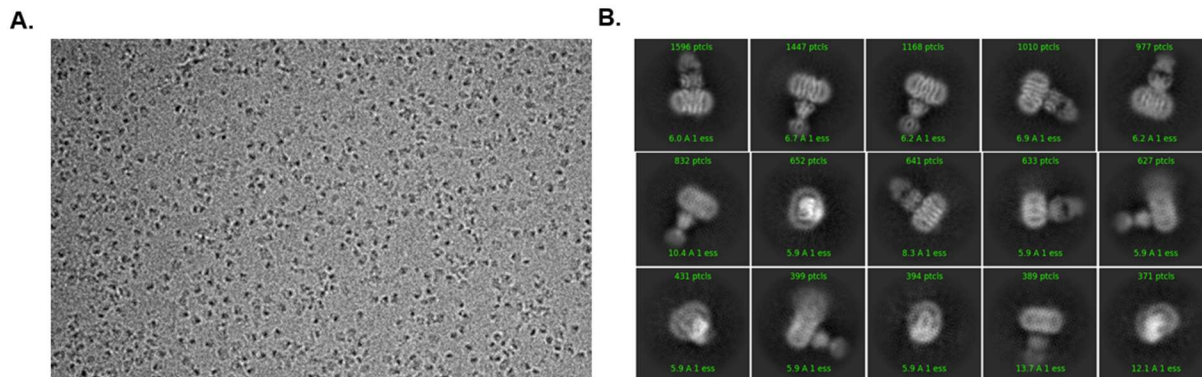


Figure 3. Data processing: (A) Preliminary 3D reconstruction of the ~ 100 kDa NorA:Fab complex from 126,632 particles. The amphipol shell around NorA was removed for clarity. (B) Estimated global resolution of the reconstruction (GSFSC = 4.99 Å). (C) Angular distribution plot of the particles in the reconstruction. Note the underrepresentation of views at $\pi/2$ and $-\pi/2$.

