

Figure 1: CryoEM reconstruction of *Tetrahymena* Telomerase with telomeric DNA binding (A) and molecular model of TERT-TER RNP core and other telomerase related proteins (B). (Jiang, et al *Science* 2015)

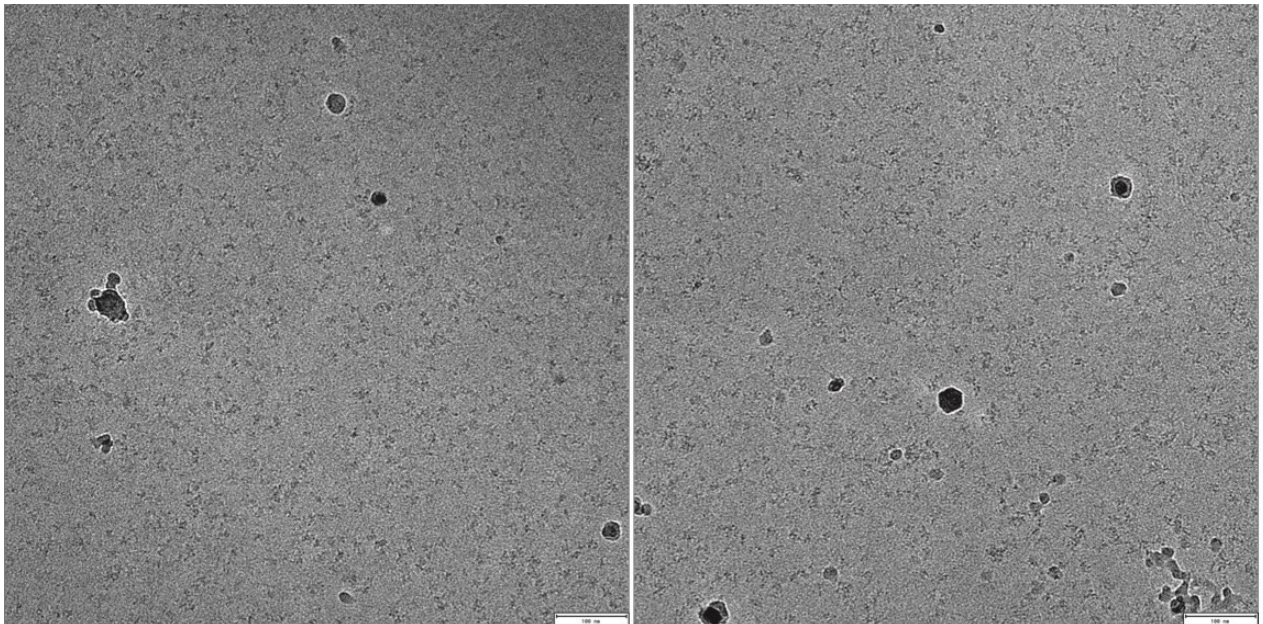


Figure 2. CryoEM images of *Tetrahymena* Telomerase with telomeric DNA binding. Images were taken on FEI TF20. The length of scale bar (bottom-right of each image) is 100 nm.

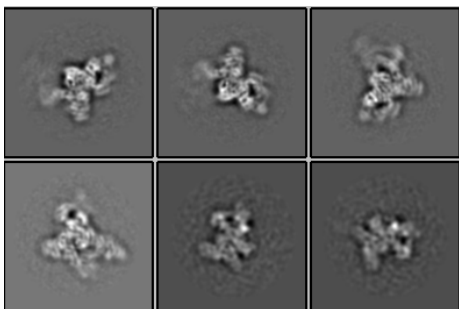


Figure 3. 2D classification results of the Telomerase holoenzyme with telomeric DNA binding. The side length of each image box is 35 nm.