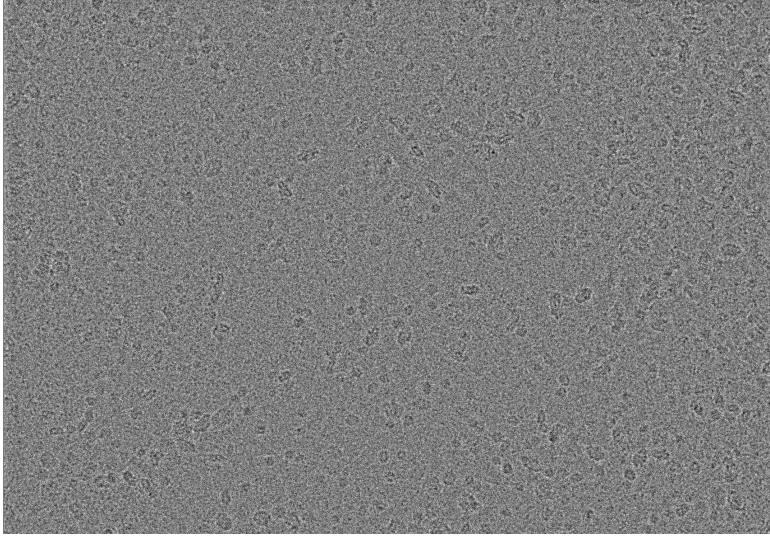
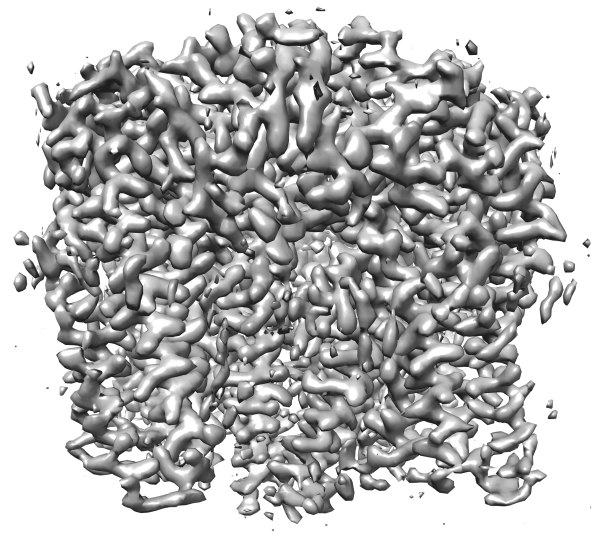


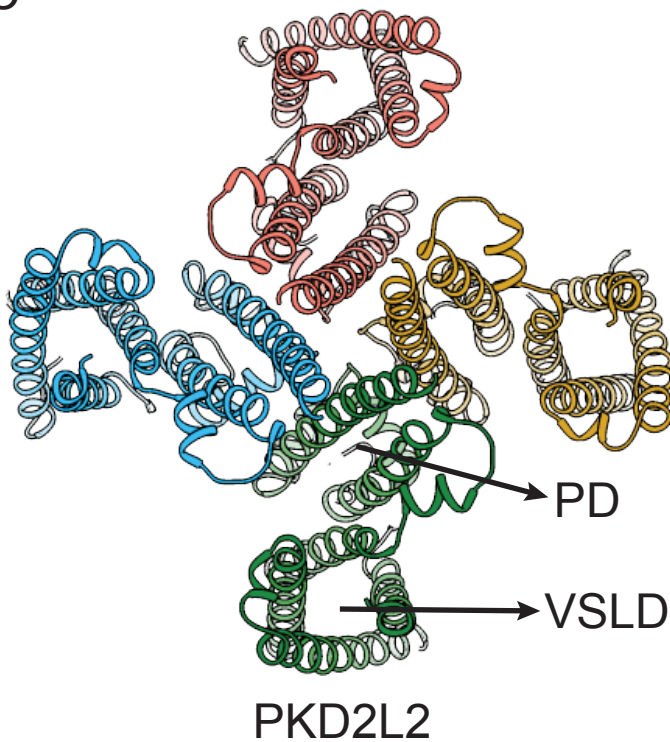
A



B



C



PKD2L2 adopts a non-domain swapped architecture. A) A representative micrograph of PKD2L2. B) A 3.0 angstrom map of PKD2L2. C) Comparison of PKD2L2 and PKD2. PKD2L2 assumes a non-domain swapped arrangement in which voltage-sensor like domain (VSLD) and pore domain (PD) engage via intra-subunit contacts. PKD2 adopts a typical domain swapped architecture such that VSLD of one subunit associates with PD of an adjacent subunit.