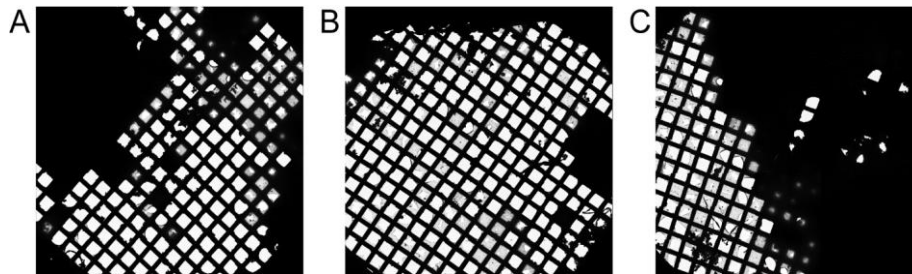
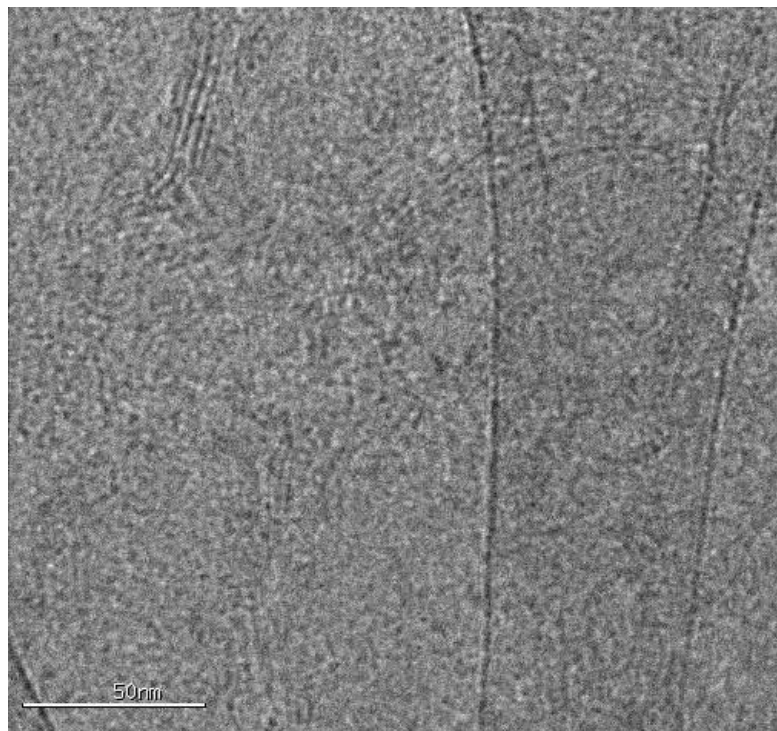


**Figure 1.** Expression of GFP-tagged GluA2-Stargazin protein complex in HEK293 TSA cells grown on lacey carbon-coated gold grids. Images represent cells 62 hours post-plating that were infected with the relevant plasmid in light **(A)** and fluorescence mode **(B)**.



**Figure 2.** Example of Atlas images for manually plunge-frozen grids blotted from one side and acquired at Glacios microscope at 200kV. **(A)** Front blotting at high cell concentration **(B)** Back blotting at high cell concentration **(C)** Front blotting at low cell concentration.



**Figure 3.** Screening untilted images acquired with Glacios microscope at 200 kV FEG. It is possible to see the densities which we identify as a cell membrane (top left, center).