

Figure 1—SNX27/retromer reconstitution. Top panel: Coomassie-stained SDS-PAGE gel following purification over S200 increase column. Upon addition of specific cargo peptides, a small population of SNX27 will bind retromer (fractions approaching 1:1 stoichiometry are marked by asterisks (*)). Bottom panel: Preliminary screening of negatively stained SNX27/retromer protein.

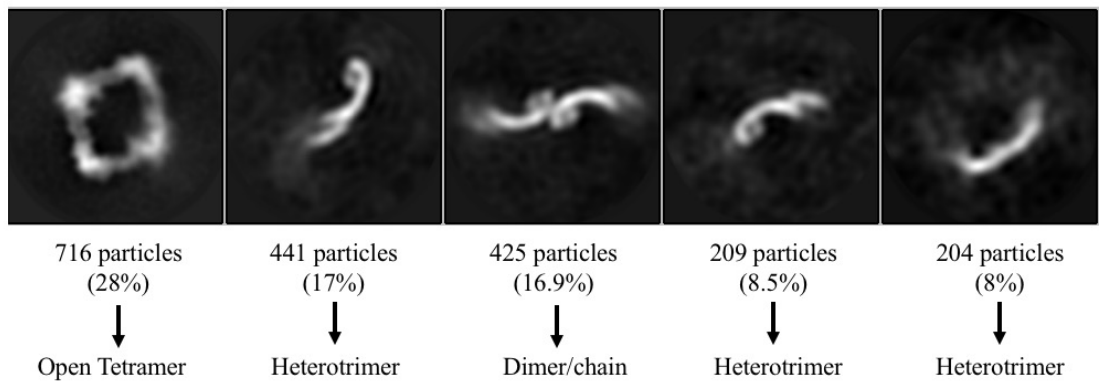


Figure 2—Preliminary 2D class averages of SNX27/retromer. N=1,995 particles