

Fig 1. (Top) Negative Stain of RSC and resulting 2D class averages. (Bottom) The class averages show a flexible lobe that we have identified as being the catalytic Sth1 subunit.

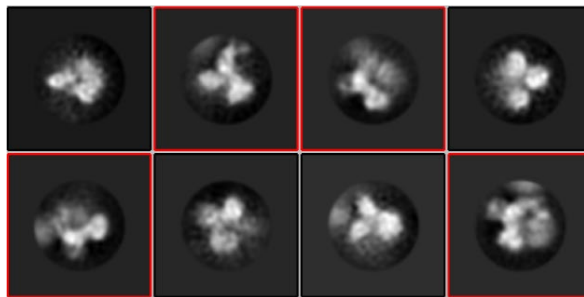
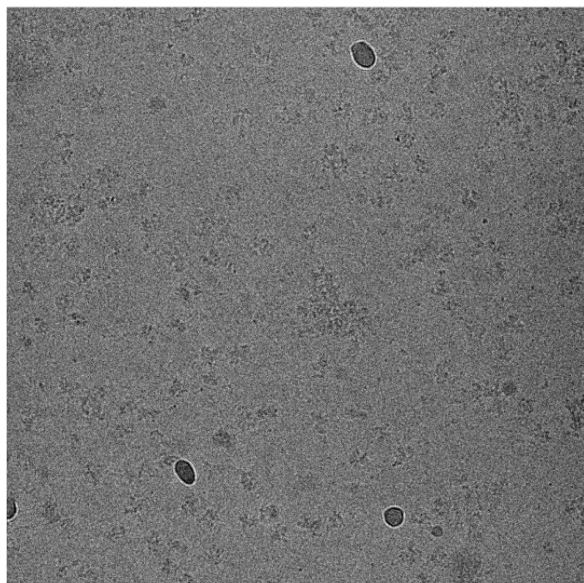


Fig 2. Cryo-EM micrograph of RSC on graphene oxide. The class averages were generated from a screening session lasting 3 hours where ~16000 particles were picked from 177 micrographs collected on a Talos Arctica equipped with a K2.

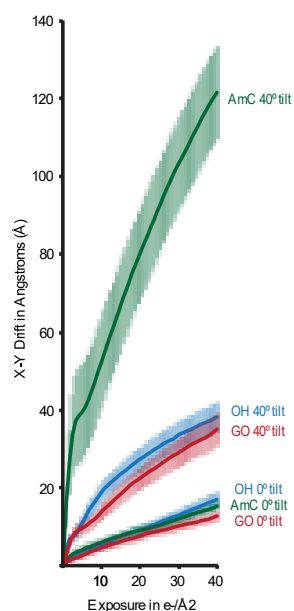


Fig 3. X-Y drift verse exposure on UltraAuFoil grids for untitled and tilted exposures for open-hole (OH), graphene-oxide (GO), and amorphous carbon (AmC) grids.