

Figure 1 | Purification of full length human SLC4A1 from insect cells. Analytical size exclusion chromatogram shows homogenous protein species with key fractions marked in red. Insert, SDS-PAGE of key fractions shows single protein species corresponding to SLC4A1.

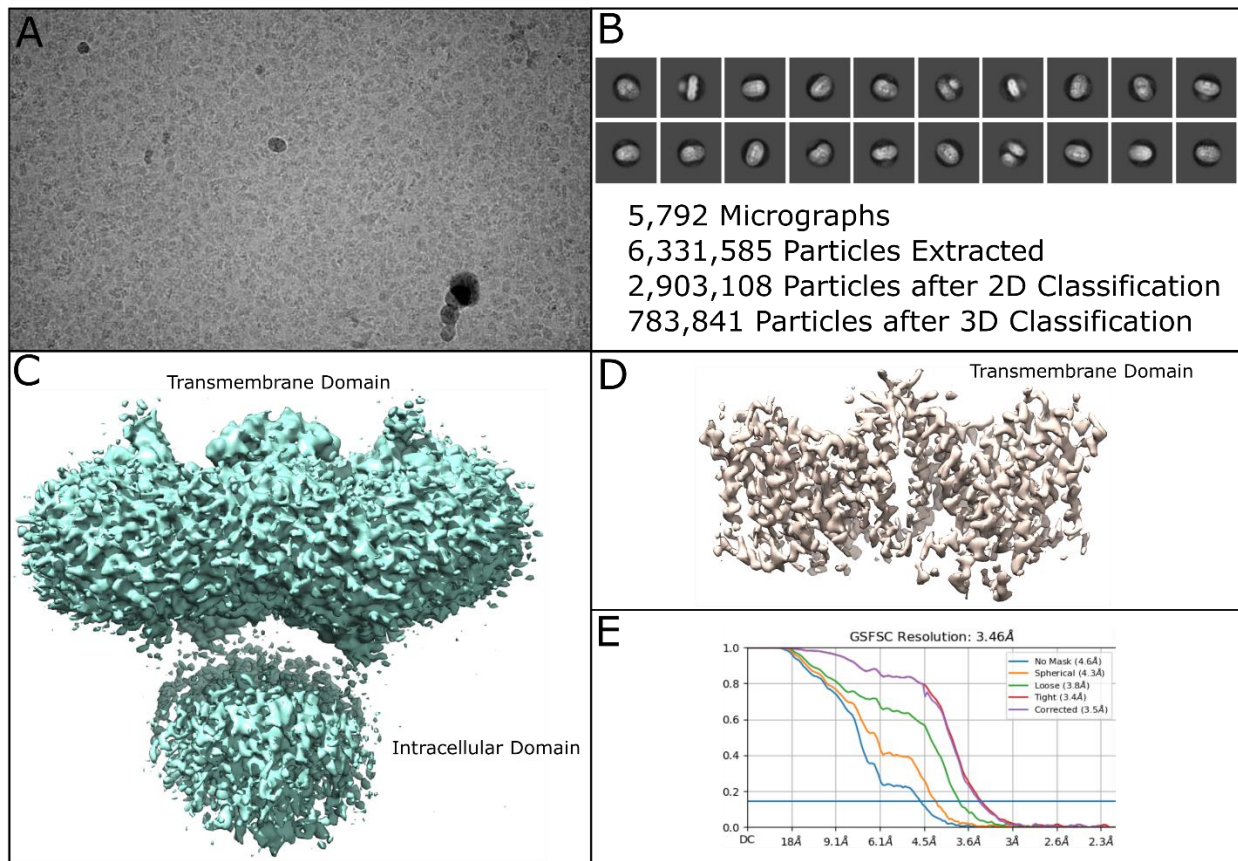


Figure 2 | Preliminary cryoEM data collection and single particle reconstitution of full length human SLC4A1. **A**, representative micrograph collected on Krios equipped with K3 camera. **B**, 2D classification of extracted particles and workflow of single particle analysis. **C**, preliminary cryoEM structure shows both transmembrane domain in detergent micelle, and intracellular domain. **D**, different surface level rendering reveals transmembrane helices of the dimeric SLC4A1 transporter and indicates side chain positions. **E**, Fourier shell correlation plot indicates a current resolution of ~3.46 Å.