

Figure 1. Complex formation between BipA and the 30S ribosome was assessed by filtration assays as described in Jeganathan *et al.* (2015) *RNA* **21**:1203-1216. Flow-through (FT) and bound (B) fractions were resolved on 4-12% bis-tris SDS-PAGE gels and visualized with Coomassie blue. From left to right the reaction mixtures contained only 30S ribosomes, only BipA, 30S ribosomal particles and BipA, and 30S ribosomal particles, BipA and ppGpp.

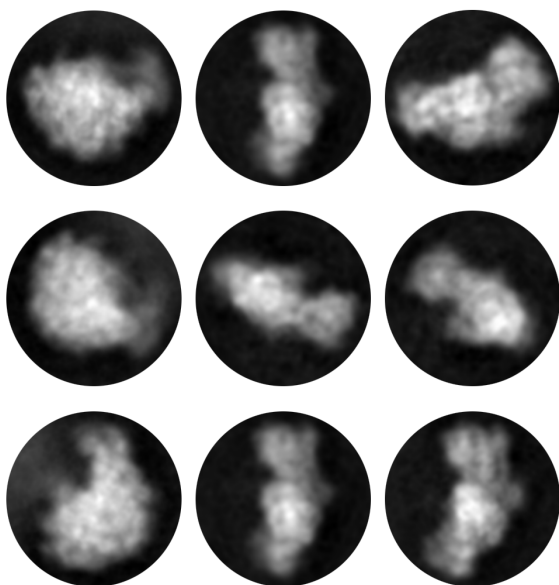


Figure 2. Examples of the class averages from a 2D classification of the cryo-EM particles of our 30S:BipA:ppGpp sample. The six class averages on the right hand side of the figure clearly represent 30S ribosomal subunits.

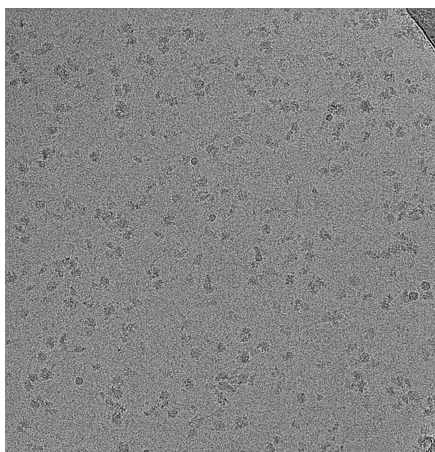


Figure 3. Representative image of ribosome sample on C-flat holey carbon grids from a Talos Artica screening session at UMASS.

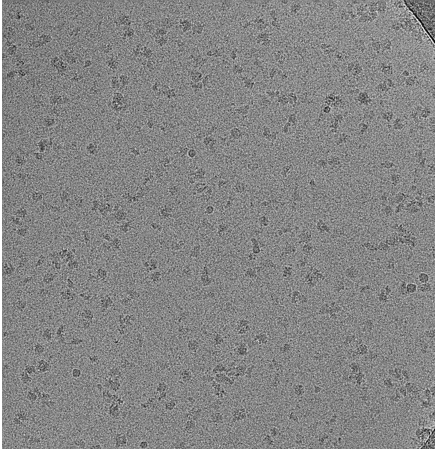


Figure 3. Representative image of ribosome sample on C-flat holey carbon grids from a Talos artica screening session at UMASS.