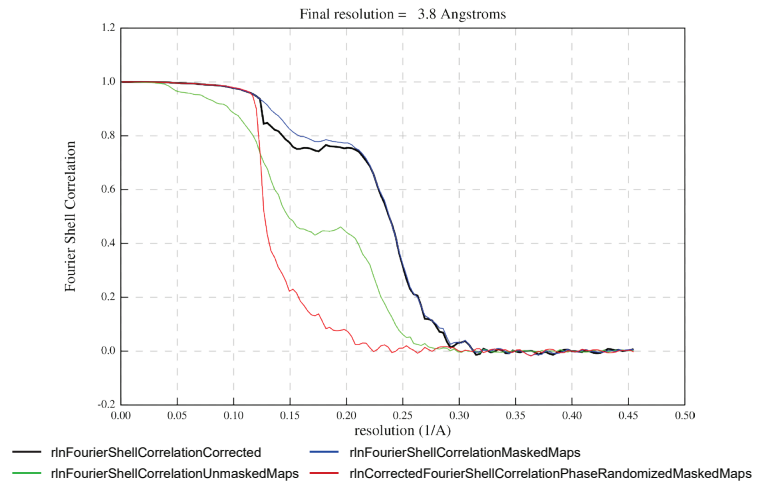
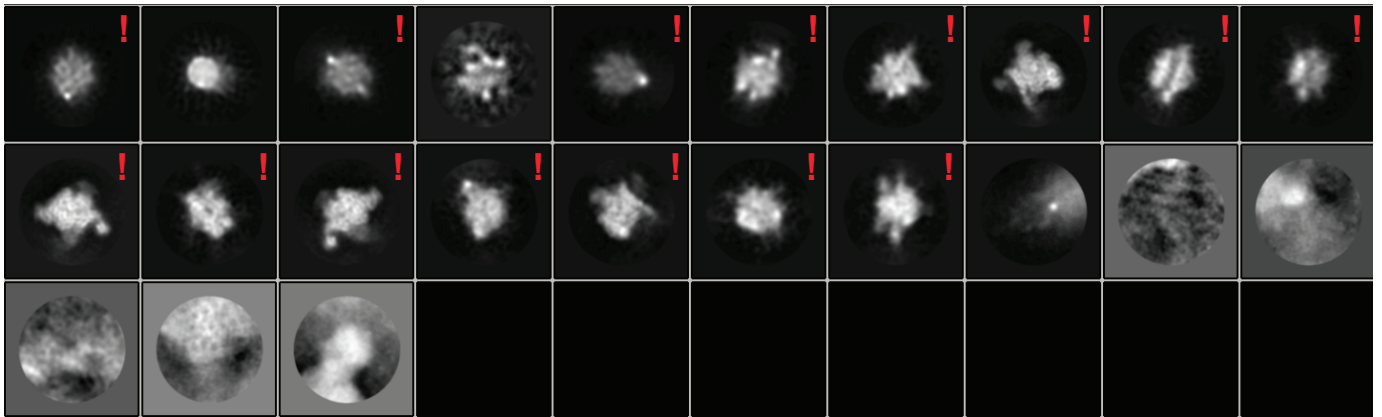




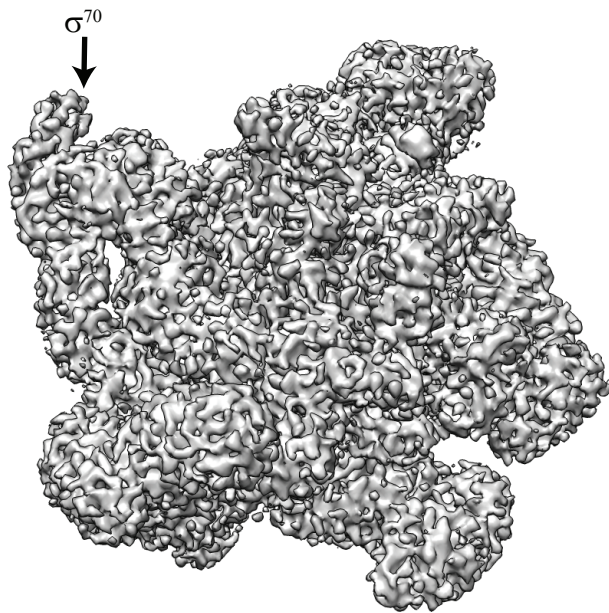
**Fig. 1.** A representative cryo-EM image of the *E. coli* RNAP initiation complex primed with a cap. The image was obtained on Krios2 at NYSBC.



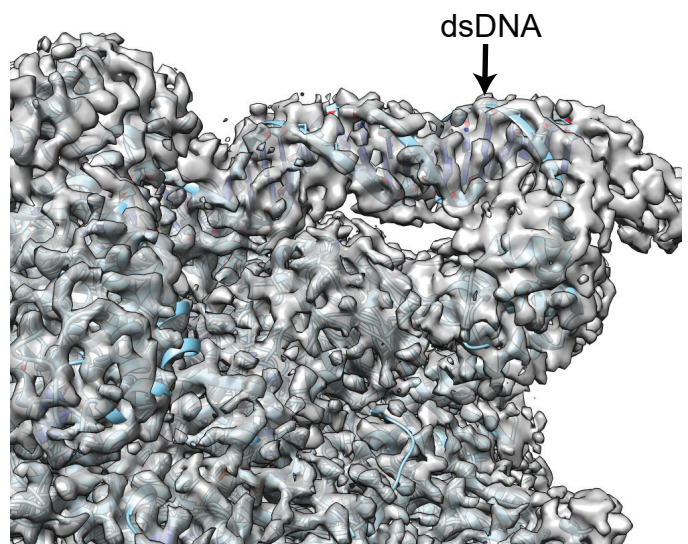
**Fig. 3.** Graph showing FSC of half-maps after 3D refinement.



**Fig. 2.** 2D classification of 109,000 particles after initial cleanup. Particles from marked 2D classes were used for 3D reconstruction.



**Fig. 4.** Final cryo-EM map of the *E. coli* transcription initiation complex. The map shows RNAP bound to the  $\sigma^{70}$  factor.



**Fig. 5.** Fragment of the cryo-EM map showing a good fit of the RNA polymerase and template DNA models.