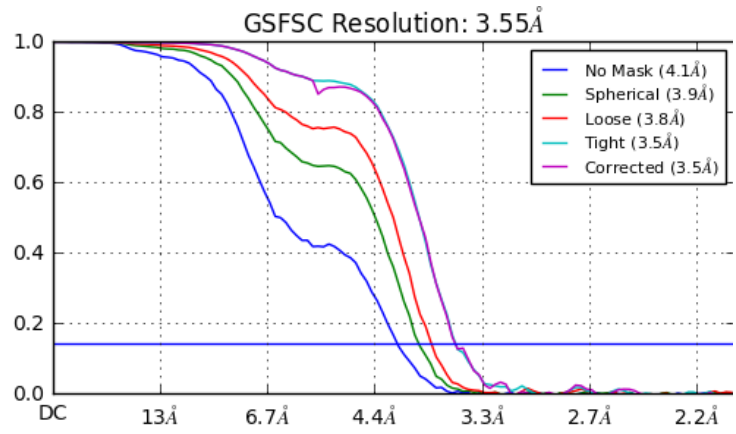
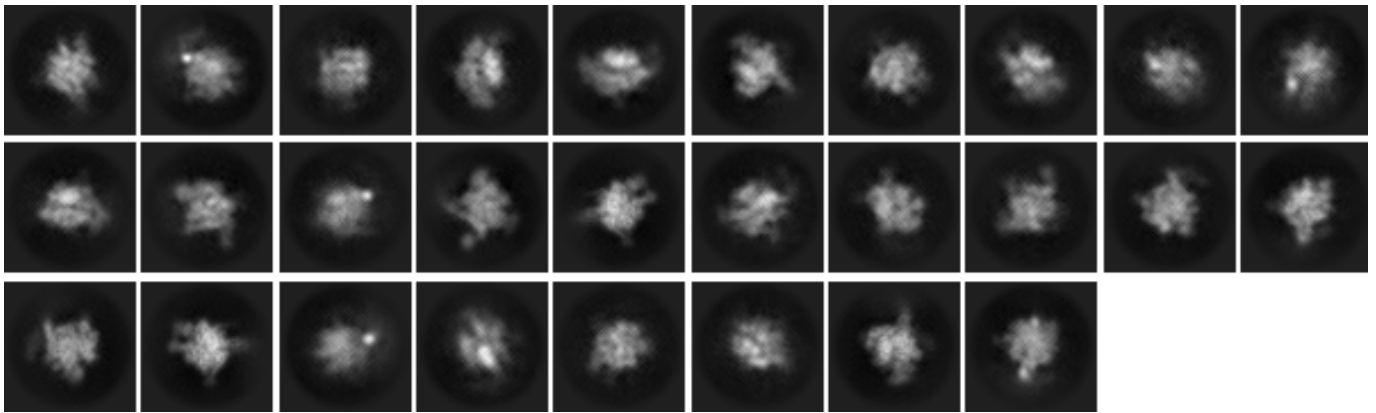


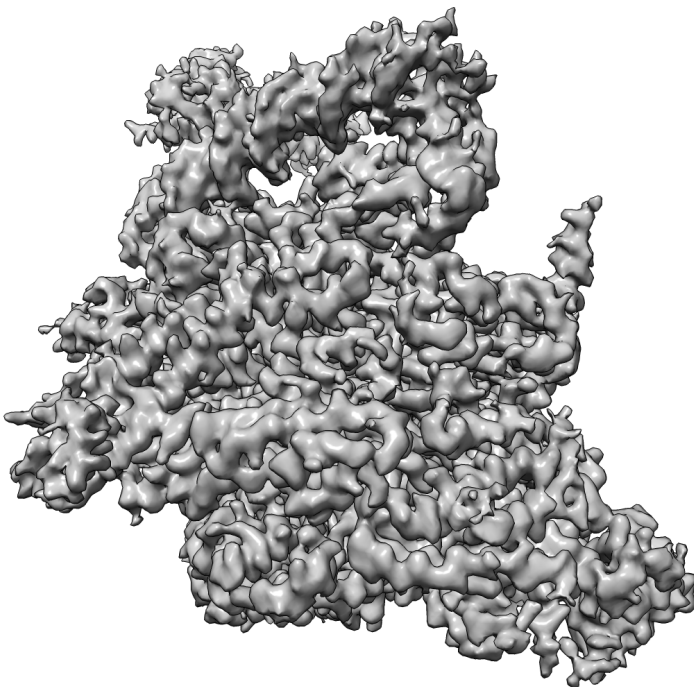
**Fig. 1.** A representative cryo-EM image of the *E. coli* RNAP initiation complex primed with a cap. The image was obtained on Krios at NYUMC facility.



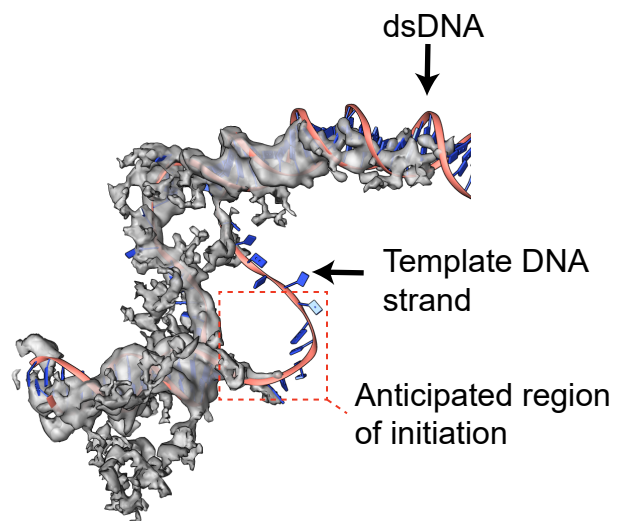
**Fig. 3.** Graph showing FSC of half-maps after 3D refinement.



**Fig. 2.** 2D classification of 209,000 particles collected on Krios at NYU..



**Fig. 4.** Final cryo-EM map of the *E. coli* transcription initiation complex.



**Fig. 5.** Fragment of the cryo-EM map showing a poor map for the template strand of the DNA.