

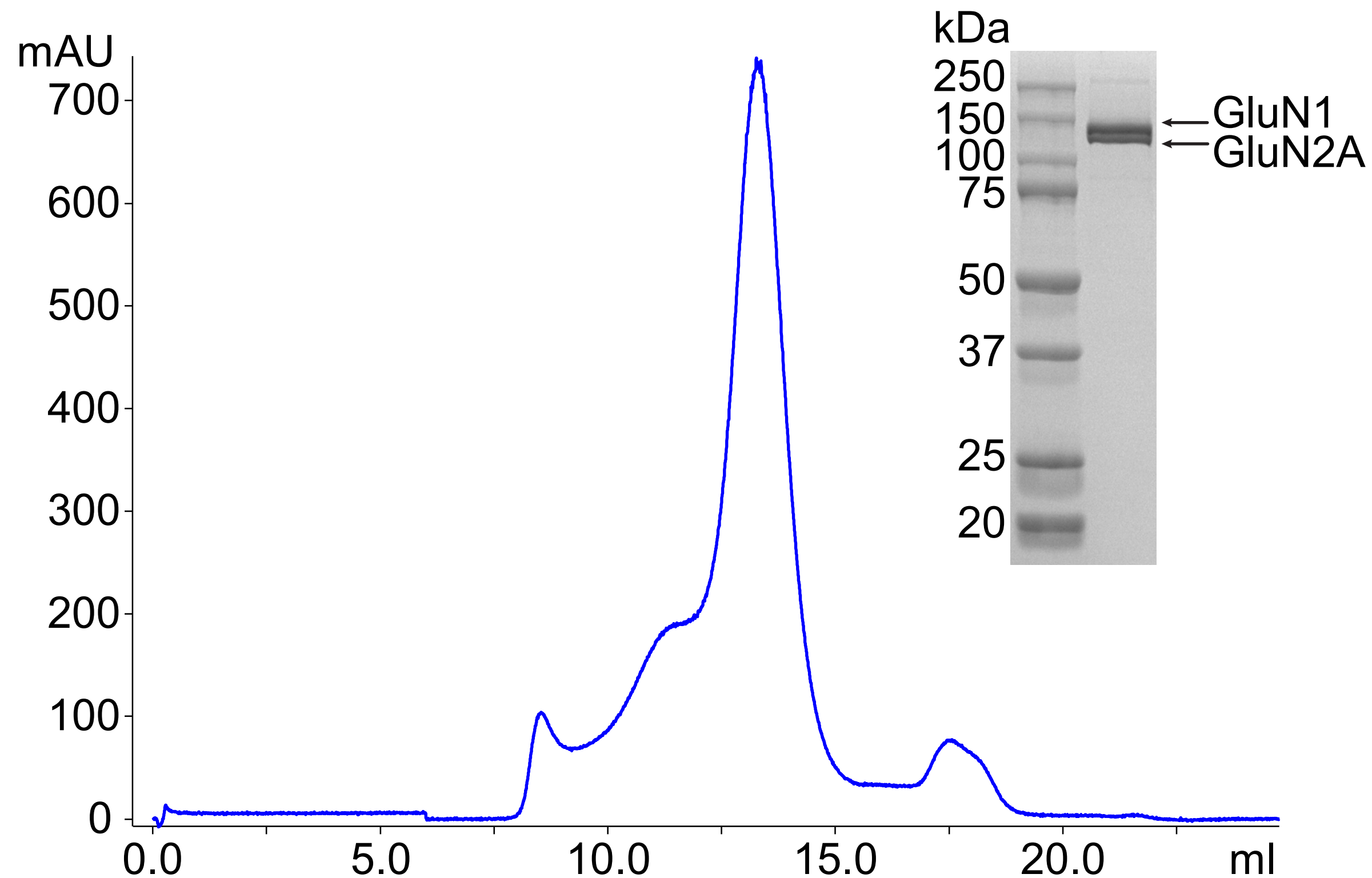
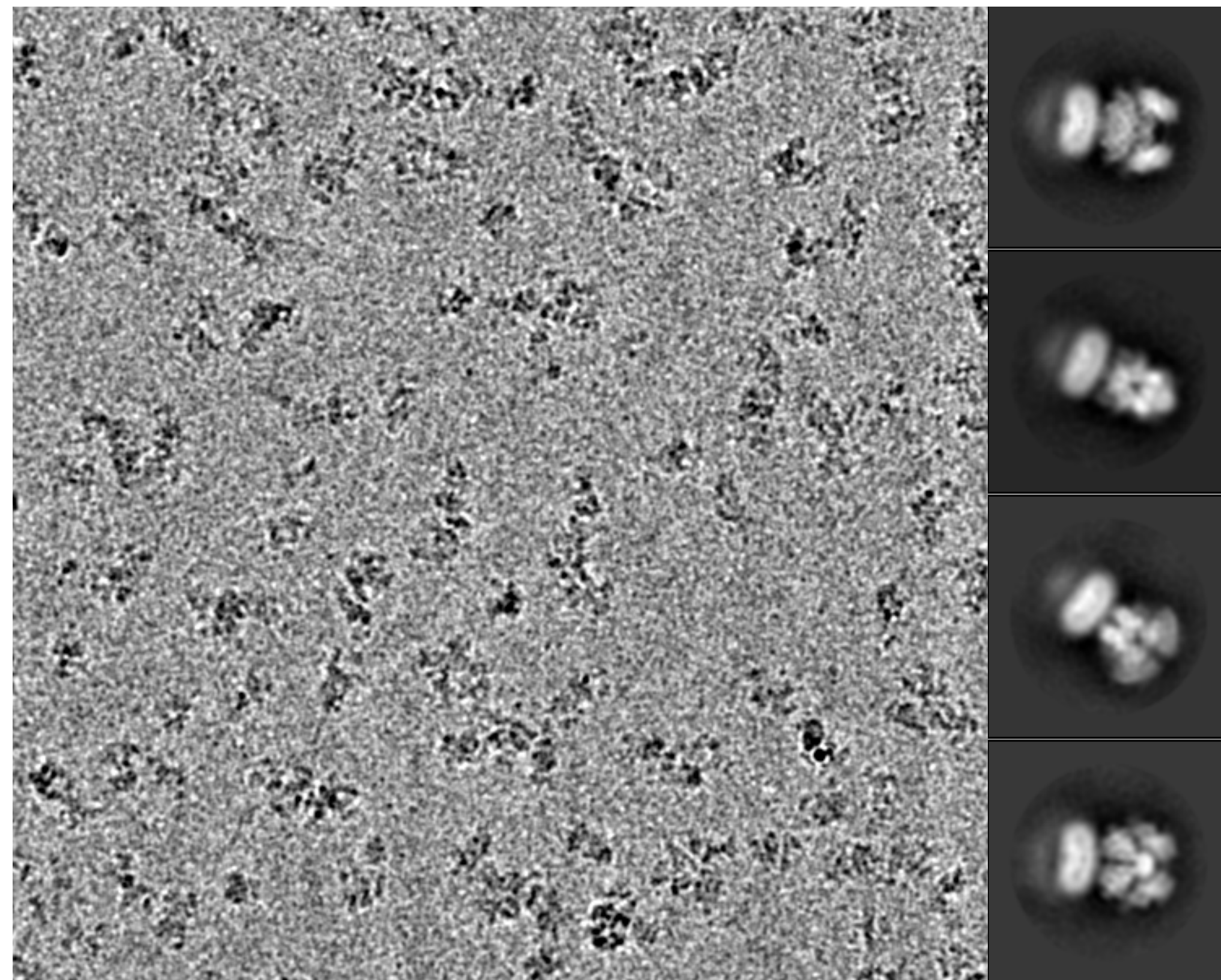
A**B**

Figure 1. Feasibility of using high- P_o GluN1/GluN2A mutants for CryoEM studies. **A:** The size-exclusion chromatography trace and the SDS-gel for the peak fraction of one of the high- P_o GluN1/GluN2A mutants used in this study. **B:** Representative micrograph (low-pass filtered for clarity) and representative 2D-classes from the sample in **A**.