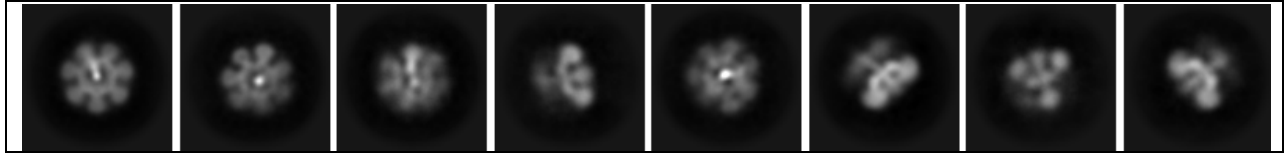
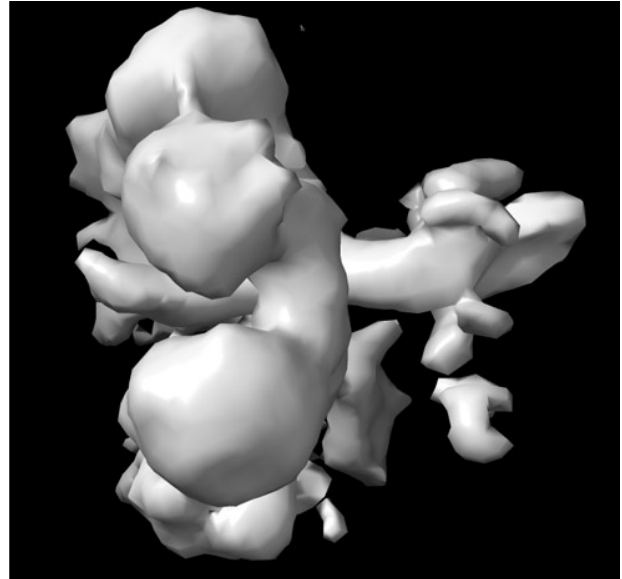
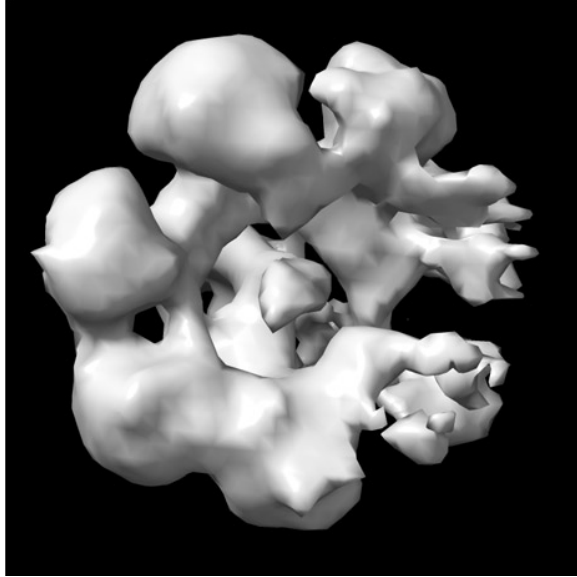


1) 2D classes of apo Rep68-AAVS1 complex



Selected classes from 30k particles collected with Titan Krios.

2) 3D model of apo Rep68-AAVS1 complex



Cryo-EM map showing that Rep68 encircles the AAVS1 DNA site. The helicase domains of four of the subunits are better defined than the other 3. (right panel) Side view (90° rotation) shows DNA density as a long rod.