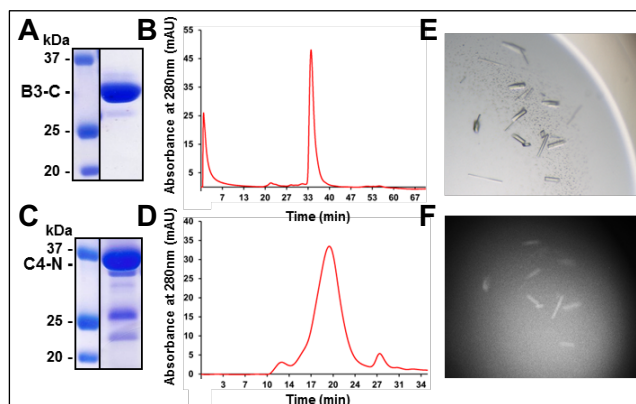


**Fig. 1. “Worst-case” B-factor for RNA polymerase.** Extrapolating the B-factor for one of our most challenging RNAP complexes to date would require 6 days of data collection for 3.2Å resolution.



**Fig. 2. ArnC and ArnD proteins.** (A) Coomassie-stained SDS-PAGE gel of purified B3-C (ArnD). (B) Representative elution profile of B3-C from analytical SEC on a Sephadex 200 10/300 GL column showing a monodispersed peak. (C) Coomassie-stained SDS-PAGE gel of purified C4-N (ArnC). (D) Representative elution profile of C4-N from analytical SEC on a Sephadex 200 5/150 GL column showing a monodispersed peak. (E) B3-C crystals, reaching 100  $\mu\text{m}$  in the longest dimension. (F) UV exposure of the crystals from (E).