

Project 1

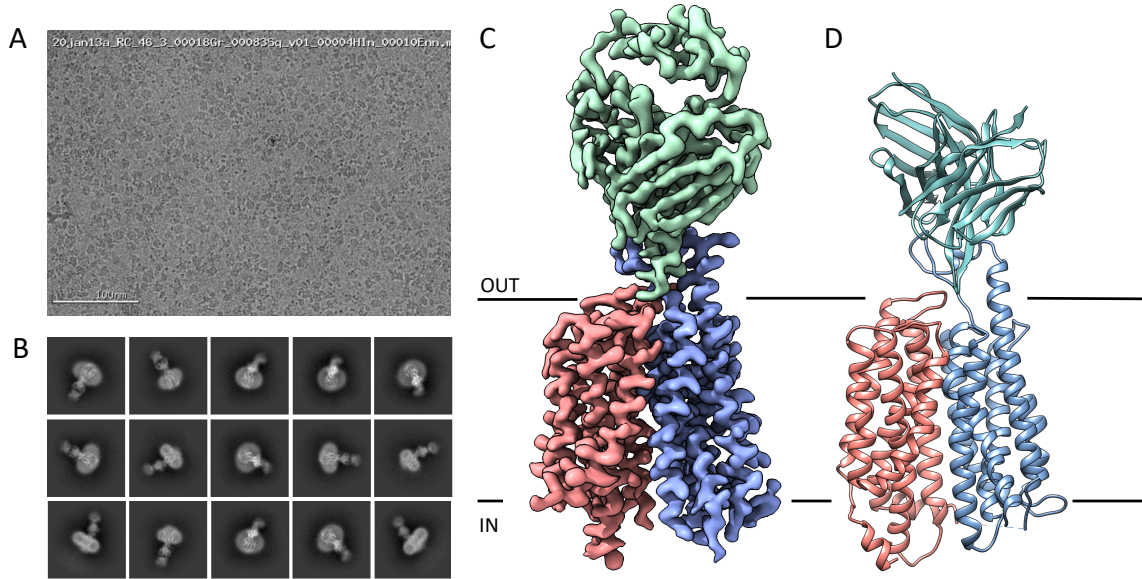


Fig. MSFD2A. Structural determination of MFSD2A in nanodiscs. (A) A representative micrograph collected on a Titan Krios electron microscope displaying individual particles of MFSD2A-Fab complex in nanodisc, 0.83 Å per pixel. (B) Representative two-dimensional class averages of MFSD2A-Fab complex in nanodisc (C) 3.3 Å resolution map of MFSD2A and the variable domain of the Fab. N-domain is colored in salmon, C-domain in blue, and Fab in teal. (D) The 3.3 Å cryo-EM structure of MFSD2A-Fab complex, with the 12 TM helices colored as in C.

Project 2

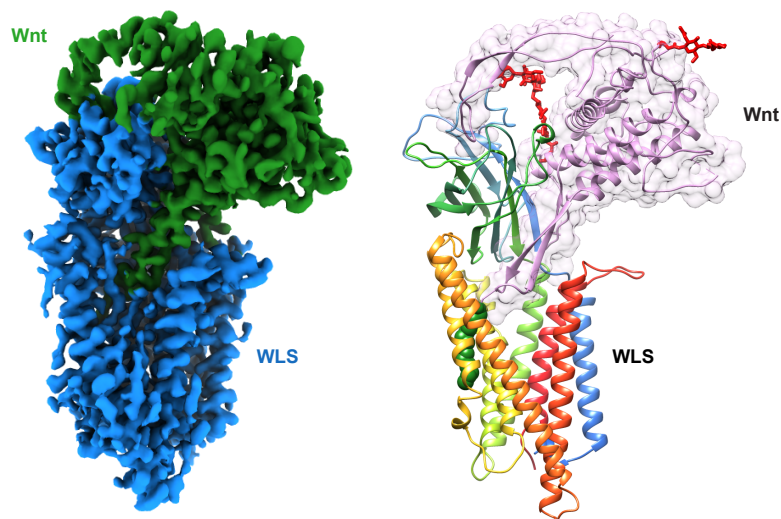


Fig. Wnt/WLS. The density map (left) and the resulting structure (right) of the 101 kDa complex of palmitoleated human WNT8A in complex with WLS, determined at 3.2 Å resolution using cryo-EM. The densities corresponding to Wnt and WLS are in green and blue, respectively

Project 3

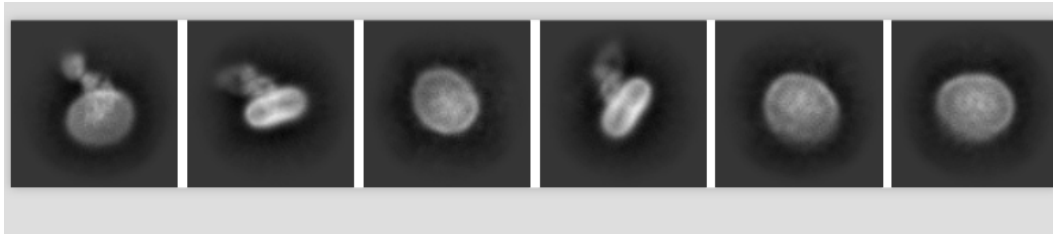


Fig. AftB. A representative micrograph is shown in the top panel, and two-dimensional (2D) averages of the Fab-bound AftB embedded in nanodisc are shown in the lower panel. The Fab protruding from the nanodisc as well as clear features within the nanodisc are clearly visible.