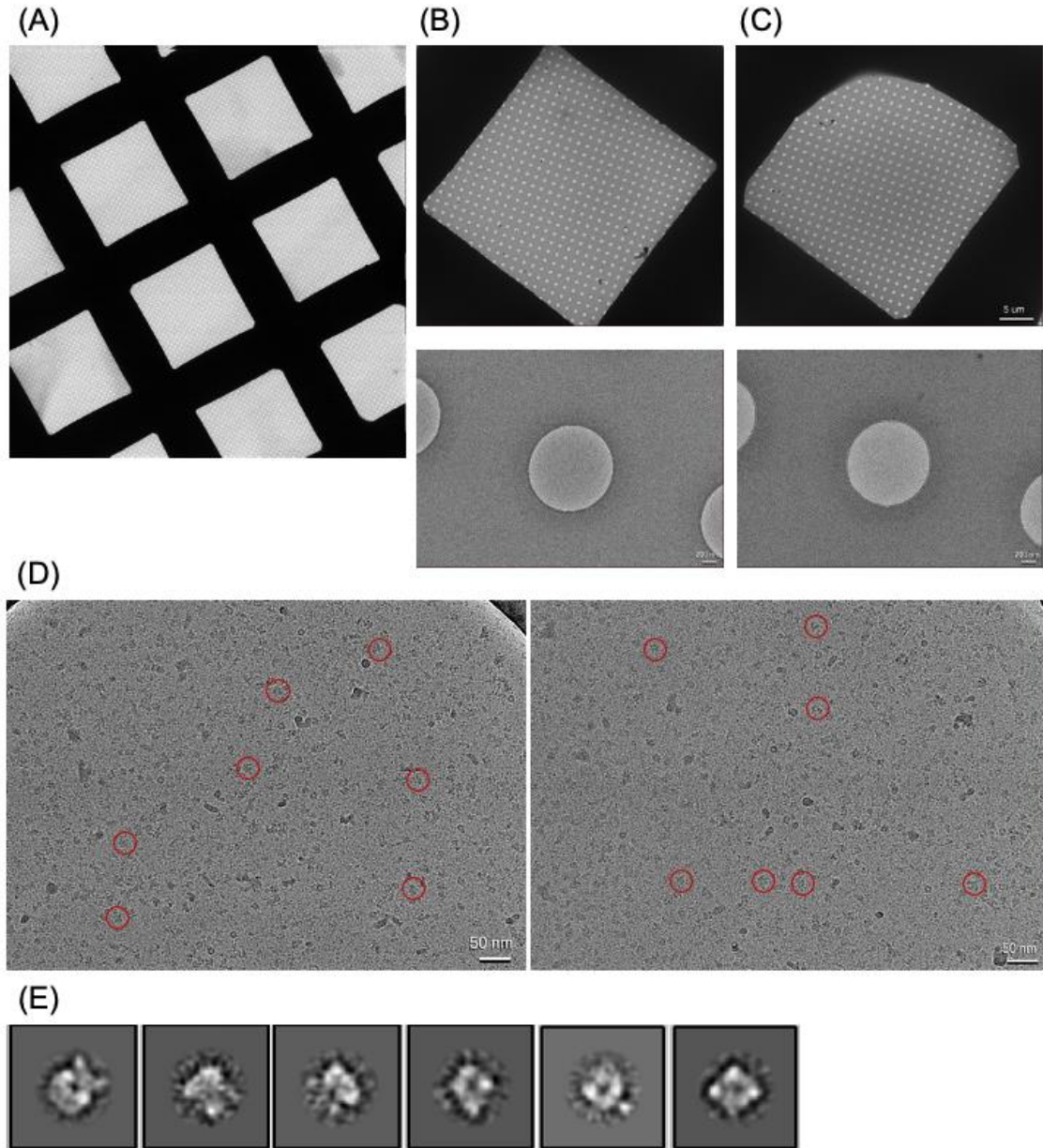


Supplementary information

In supplementary to this RAP1 proposal, we have frozen and screened multiple cryo-EM grids for the proposed protein using similar sample conditions. Here we provide representative screening images at both high- and low-magnifications as well as our preliminary data analysis.



(A) A partial atlas image at 210x magnification showing the uniform appearance of grid squares across the grid which is qualified for data collection.

(B-C) Representative images of two grid squares (top) and the corresponding grid holes (bottom).

(D) Two representative micrographs acquired at 28,000x magnification with 1.45 Å/pixel. Red circles indicate protein particles.

(E) Preliminary 2D class averages produced by ~3300 particles extracted from 10 micrographs of similar quality to the images shown in (D). All the representative images were acquired on a Talos Arctica (200keV) microscope with a K3 detector.